

# Beni soit ton nom

♩ = 116

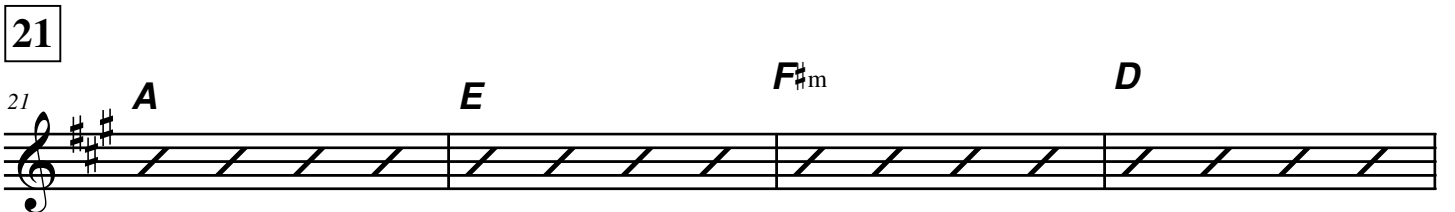
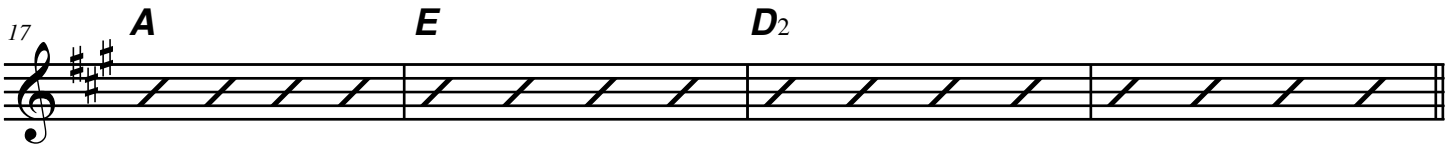
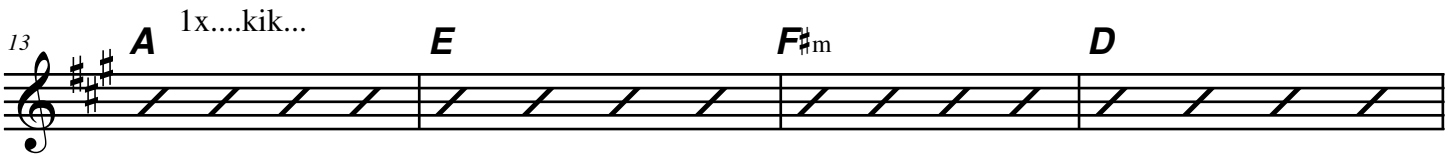
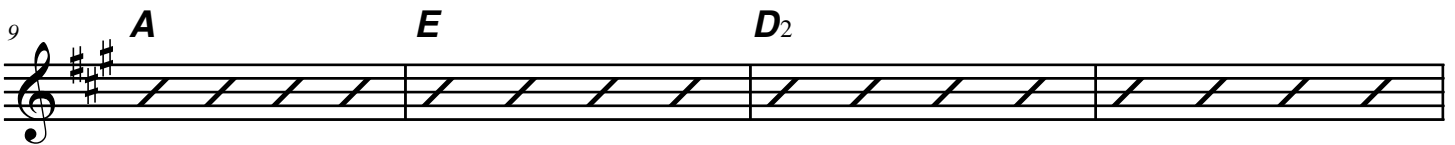
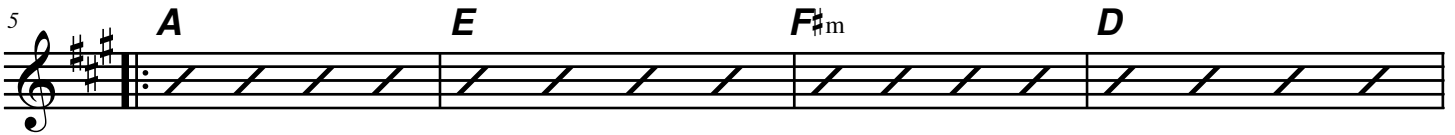
Matt Redman

**INTRO** Synth intro wth organ...

**A** **E/A** **A<sub>sus4</sub>**



**A** 1x bass/ride + vocals  
2x piano / drums / bass



**B**  $\text{\textcircled{B}}$

A E F#m D

29

A E F#m E To Coda  $\text{\textcircled{C}}$

33

D<sub>2</sub> D

36 1. back to A 2. D.S. al Coda

**coda**  $\text{\textcircled{C}}$

D C A E

39

- 3rd time, drop down  
- 4th-5th time build up)

(A/C#) (E/B)

F#m7 D A E

43

F#m D D A E

47

(2nd time)  
(4th time)

F#m D A E F#m E D (D/F#)

52 4th time FINALE

D Back to C

58