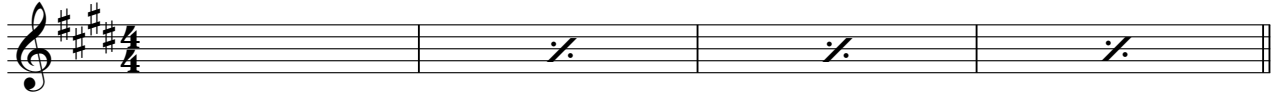


# Quel Autre

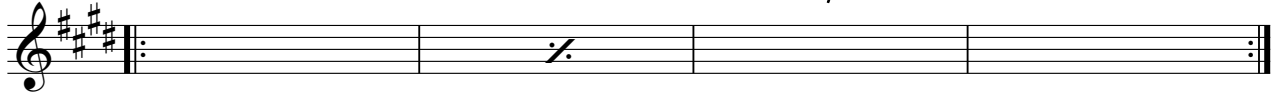
## INTRO

E E(add2) E Emaj7



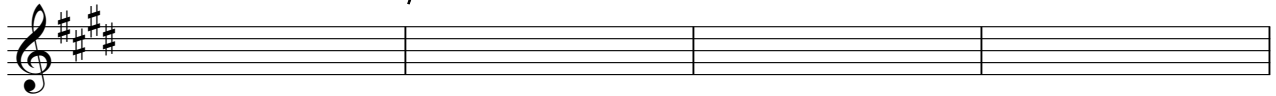
A

5 E E(add2) E Emaj7 D A/C# E E(add2) E Emaj7

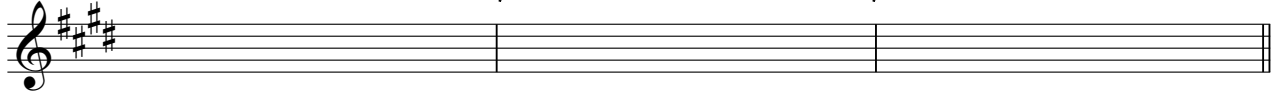


B

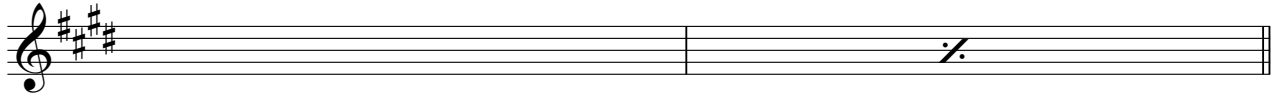
9 B D/A A E E(add2) E Emaj7



13 B D/A A/C#

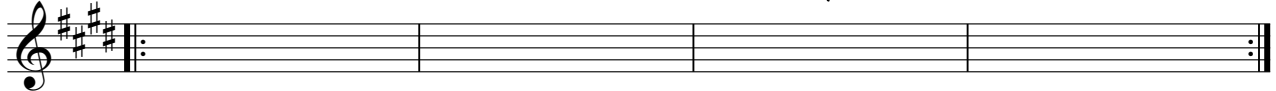


16 E E(add2) E Emaj7



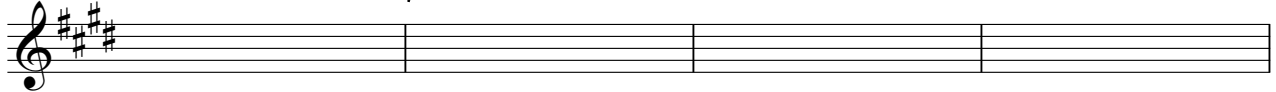
A'

18 E D A/C# E

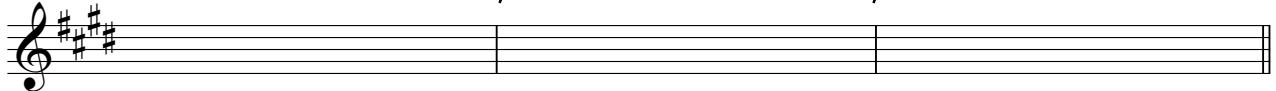


B'

22 B D/A A E

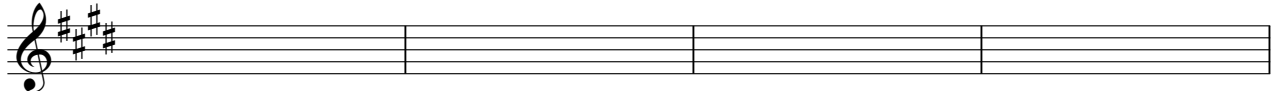


26 B D/A A/C#



## Instrumental

29 E D A E



33 D A E D A E

**B''**  
37 B D/A A E

41 B D/A A/C#

**Finale**  
44 E E(sus4) E E(add2) E