

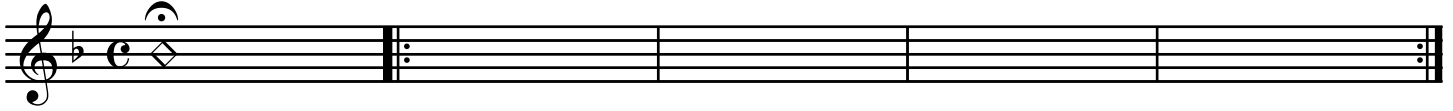
# Je chante Alleluia

Stéphane Quéry

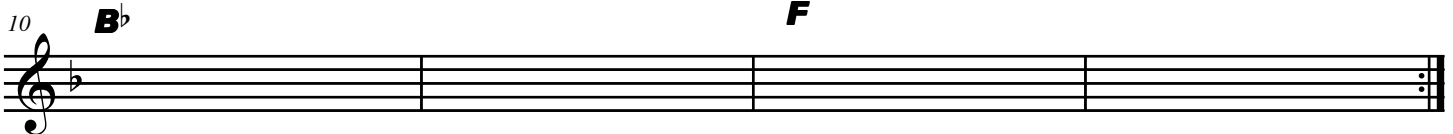
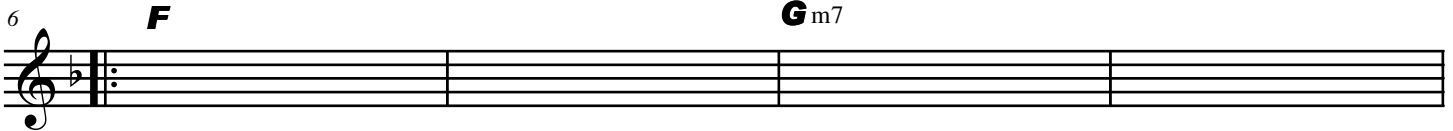


Hold String pad

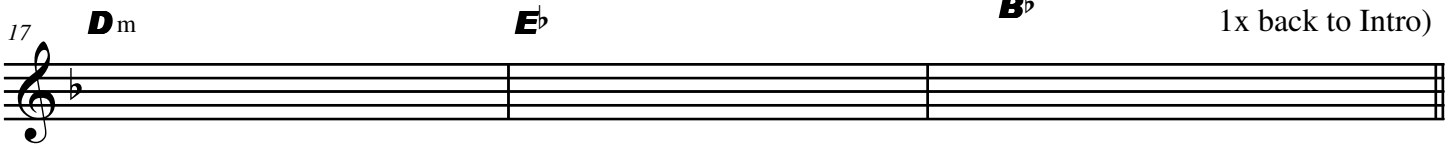
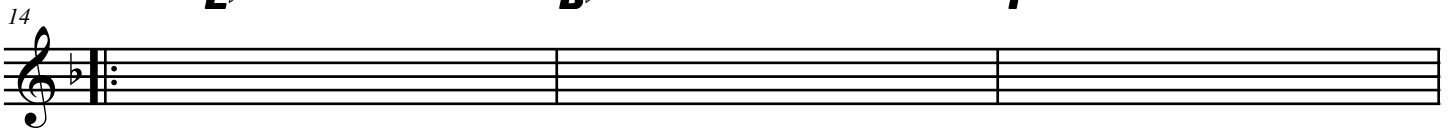
**F** **F** *INTRO : Acoustic Strum*



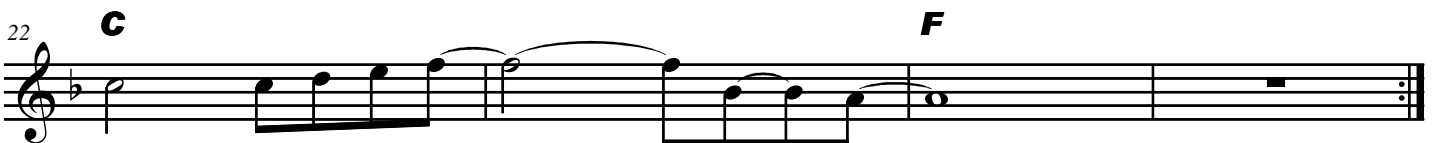
**A** **A1**



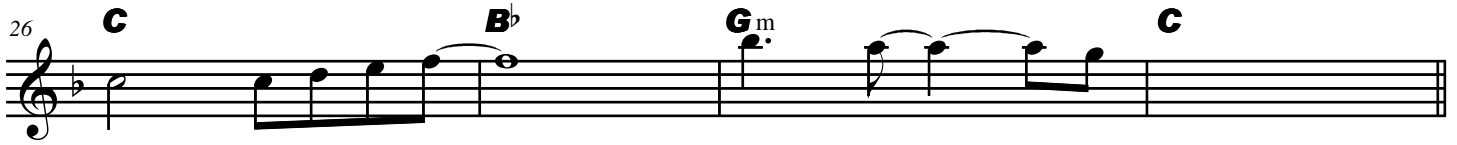
**B** **B1**



**C** BRIDGE : SOLO Gtr & Piano



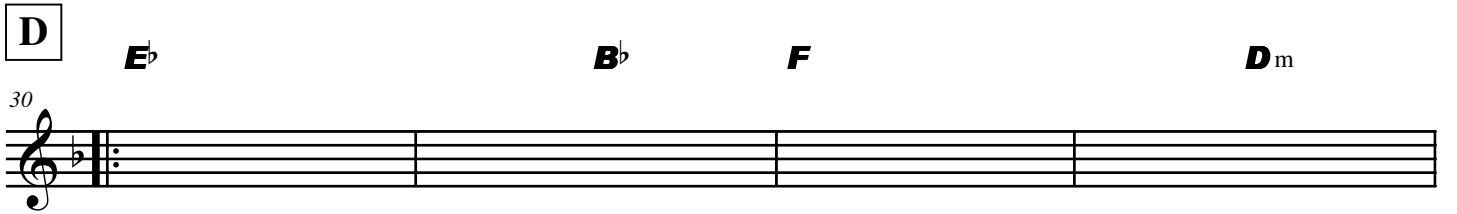
26 **C** **B<sup>b</sup>** **G<sup>m</sup>** **C**



A musical staff in treble clef with a key signature of one flat. It contains four measures of music. Above the staff are the chords C, B<sup>b</sup>, G<sup>m</sup>, and C. The notes are: C4, E4, G4, A4, B4, A4, G4, F4, E4, D4, C4.

**D** **E<sup>b</sup>** **B<sup>b</sup>** **F** **D<sup>m</sup>**

30

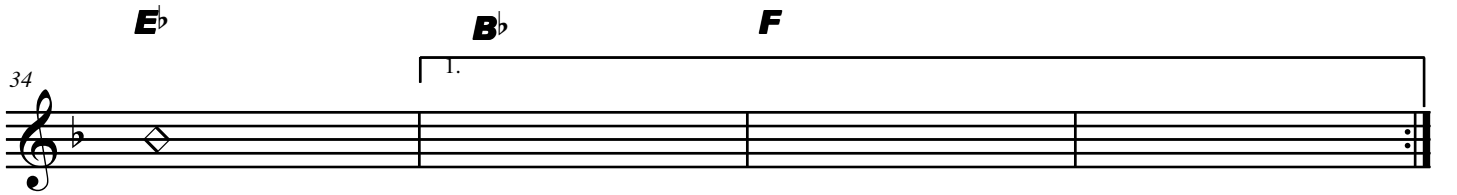


A musical staff in treble clef with a key signature of one flat. It starts with a double bar line and a repeat sign. Above the staff are the chords D, E<sup>b</sup>, B<sup>b</sup>, F, and D<sup>m</sup>.

**E<sup>b</sup>** **B<sup>b</sup>** **F**

34

1.

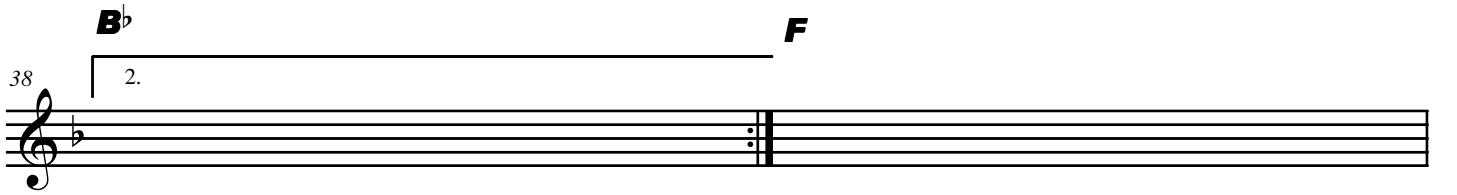


A musical staff in treble clef with a key signature of one flat. It contains a diamond symbol in the first measure. A bracket labeled '1.' spans the last two measures. Above the staff are the chords E<sup>b</sup>, B<sup>b</sup>, and F.

**B<sup>b</sup>** **F**

38

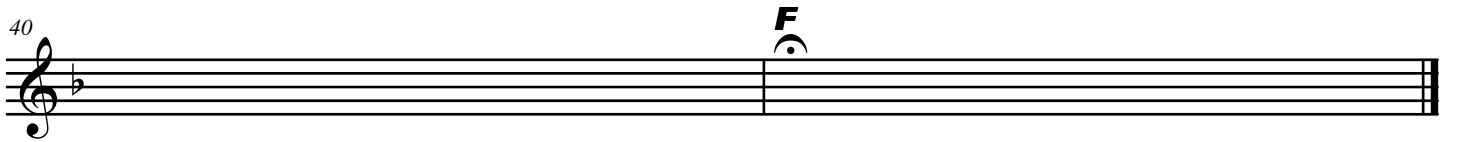
2.



A musical staff in treble clef with a key signature of one flat. It contains a diamond symbol in the first measure. A bracket labeled '2.' spans the last two measures. Above the staff are the chords B<sup>b</sup> and F.

**F**

40



A musical staff in treble clef with a key signature of one flat. It contains a diamond symbol in the first measure. Above the staff is the chord F.

Arrangements par Sebastian Demrey & Jimmy Lahaie